

Approved
PUD



25' Alley looking east

1311 E Street, SE Washington DC 20003

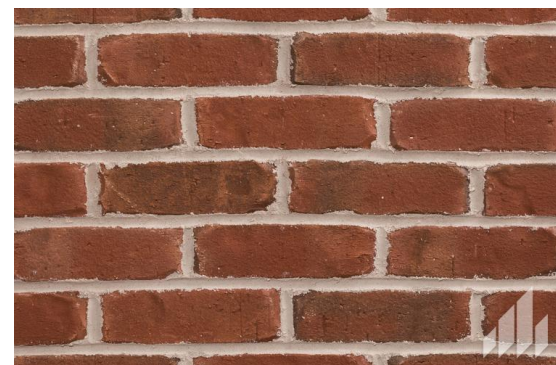


20 June 2016

A. 35
ZONING COMMISSION
District of Columbia
CASE NO. 15-13A
EXHIBIT NO. 1C1

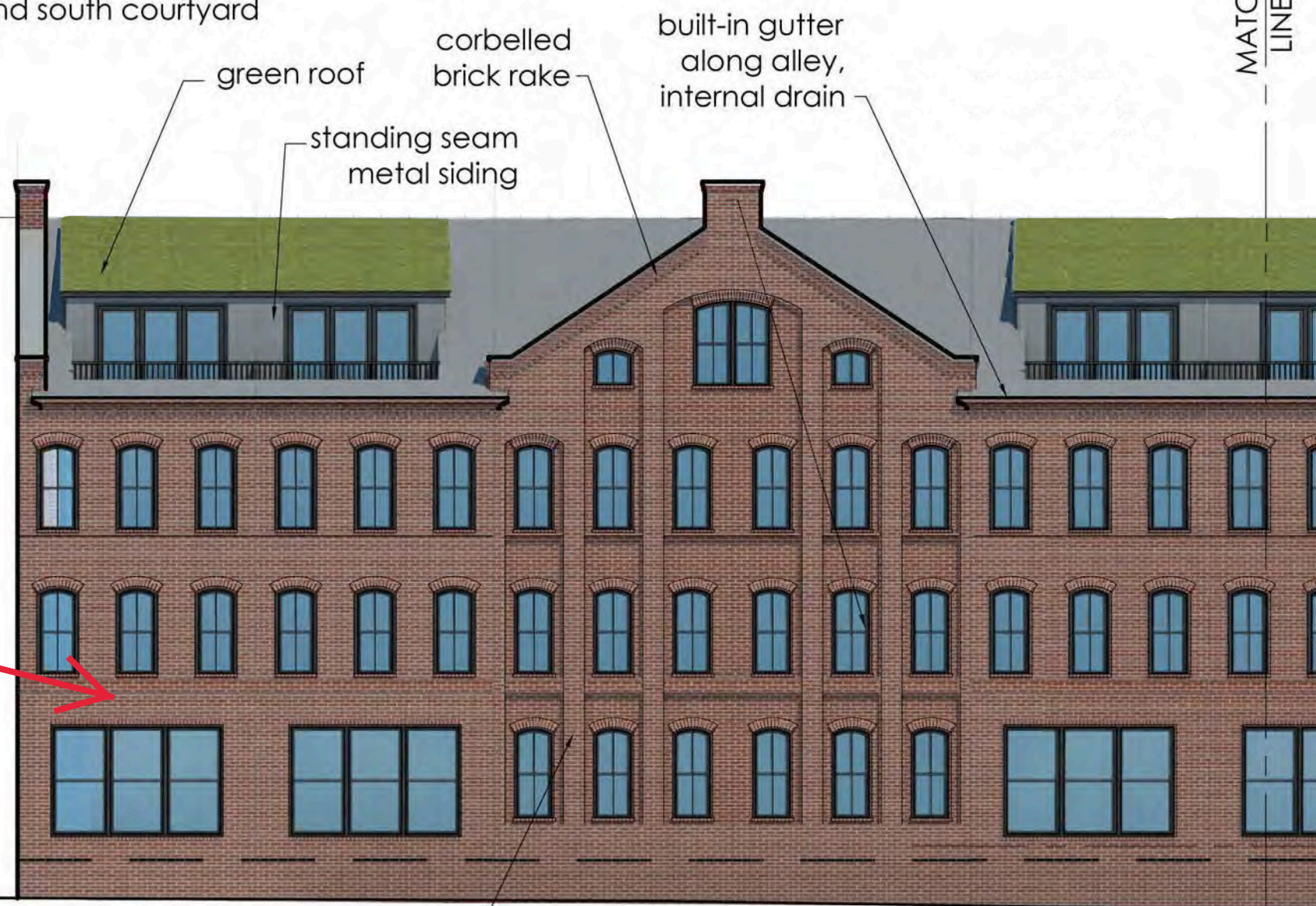
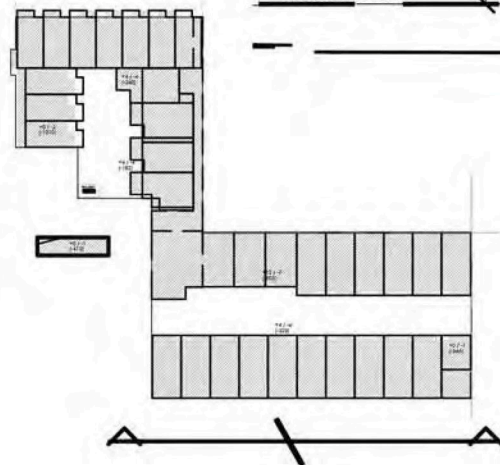
Approved
PUD

note: internal drains on alleys
and south courtyard

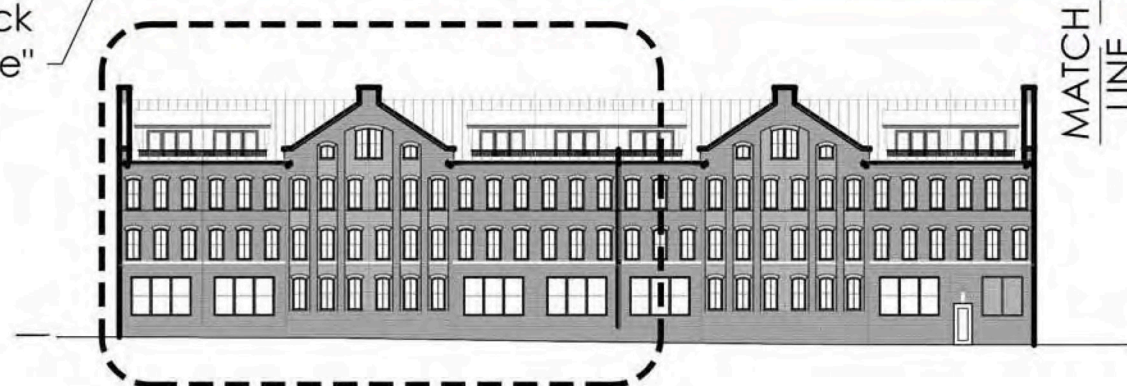


45'-1 1/2"

77.5 base elevation
centerline at east
street facade



red brick
"mesa verde"



30' Alley Elevation - West end

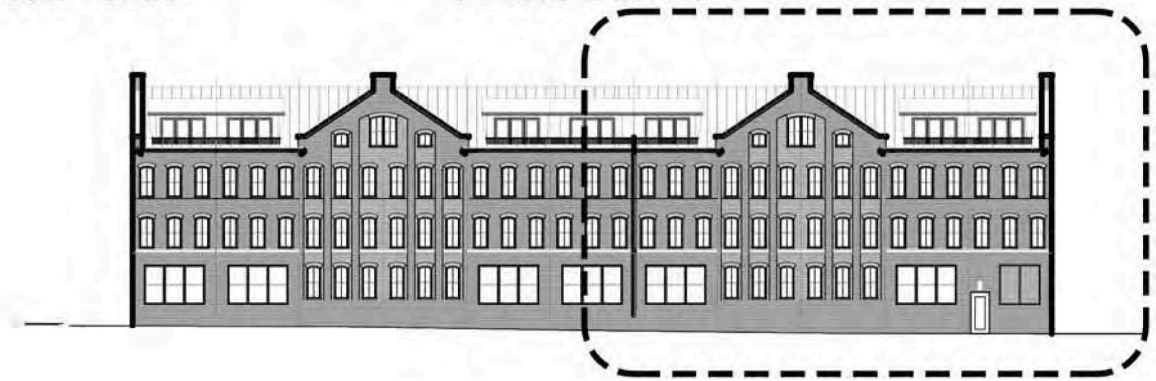
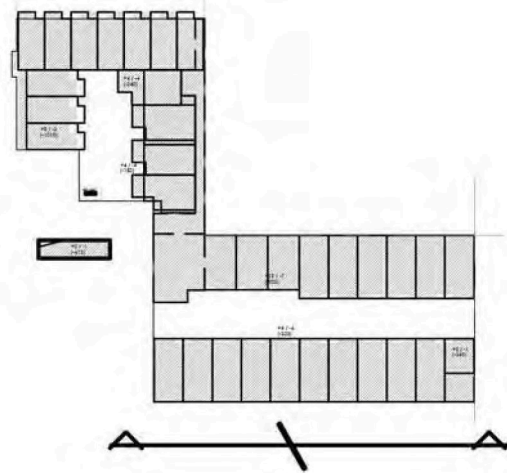
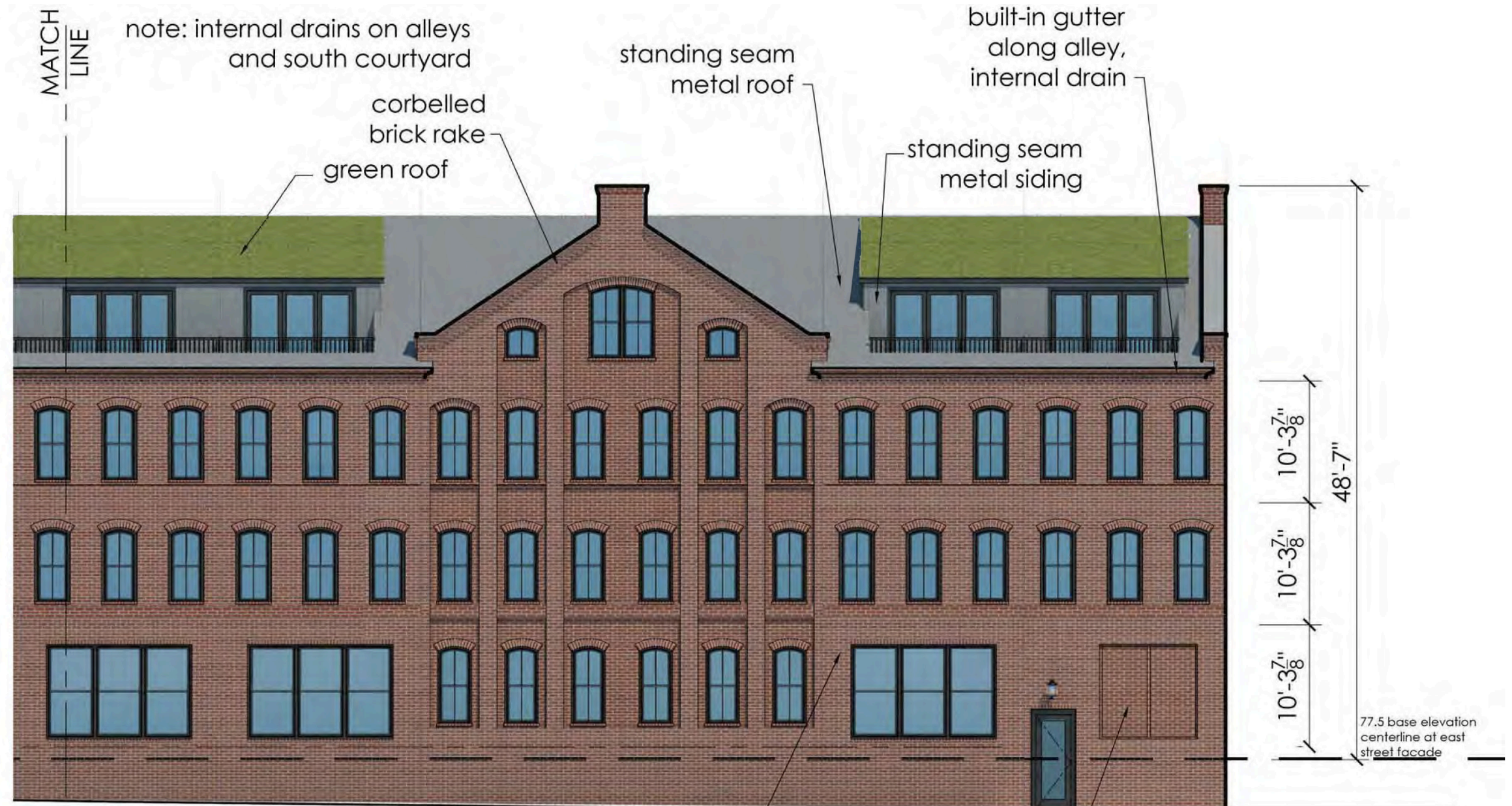
1311 E Street, SE Washington DC 20003



20 June 2016

A . 40

Approved
PUD



30' Alley elevation - East end

1311 E Street, SE Washington DC 20003



20 June 2016

A . 41